

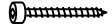








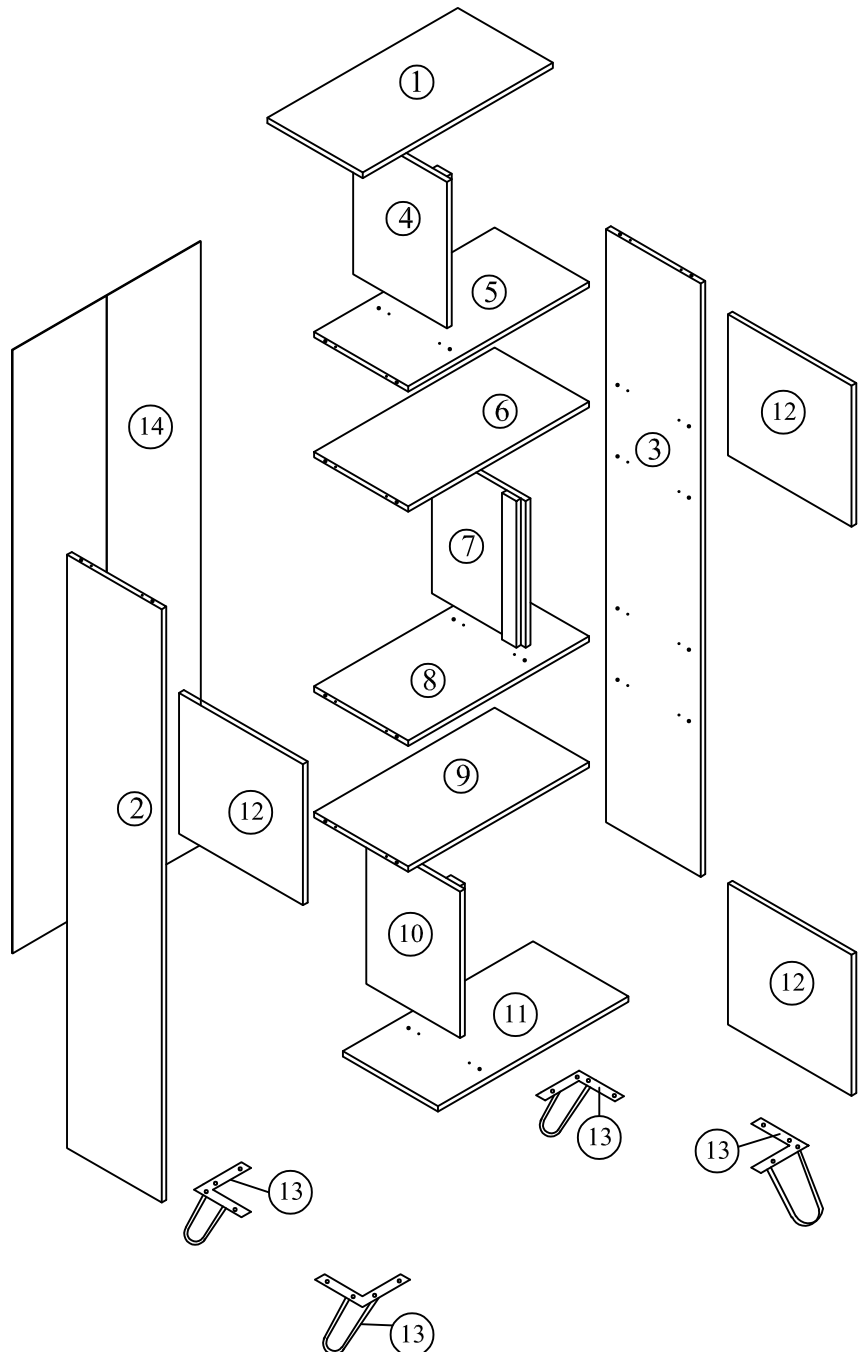
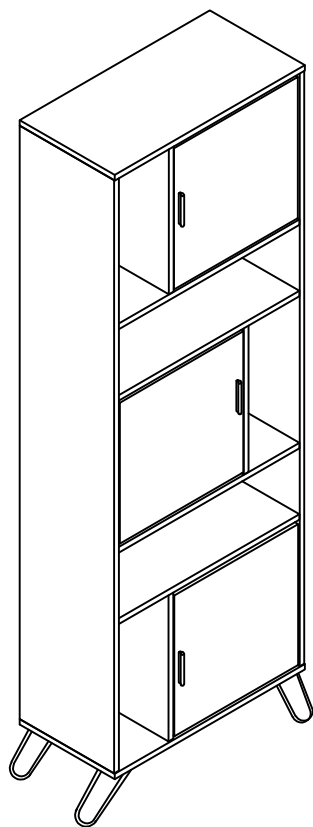


Assembly Instructions

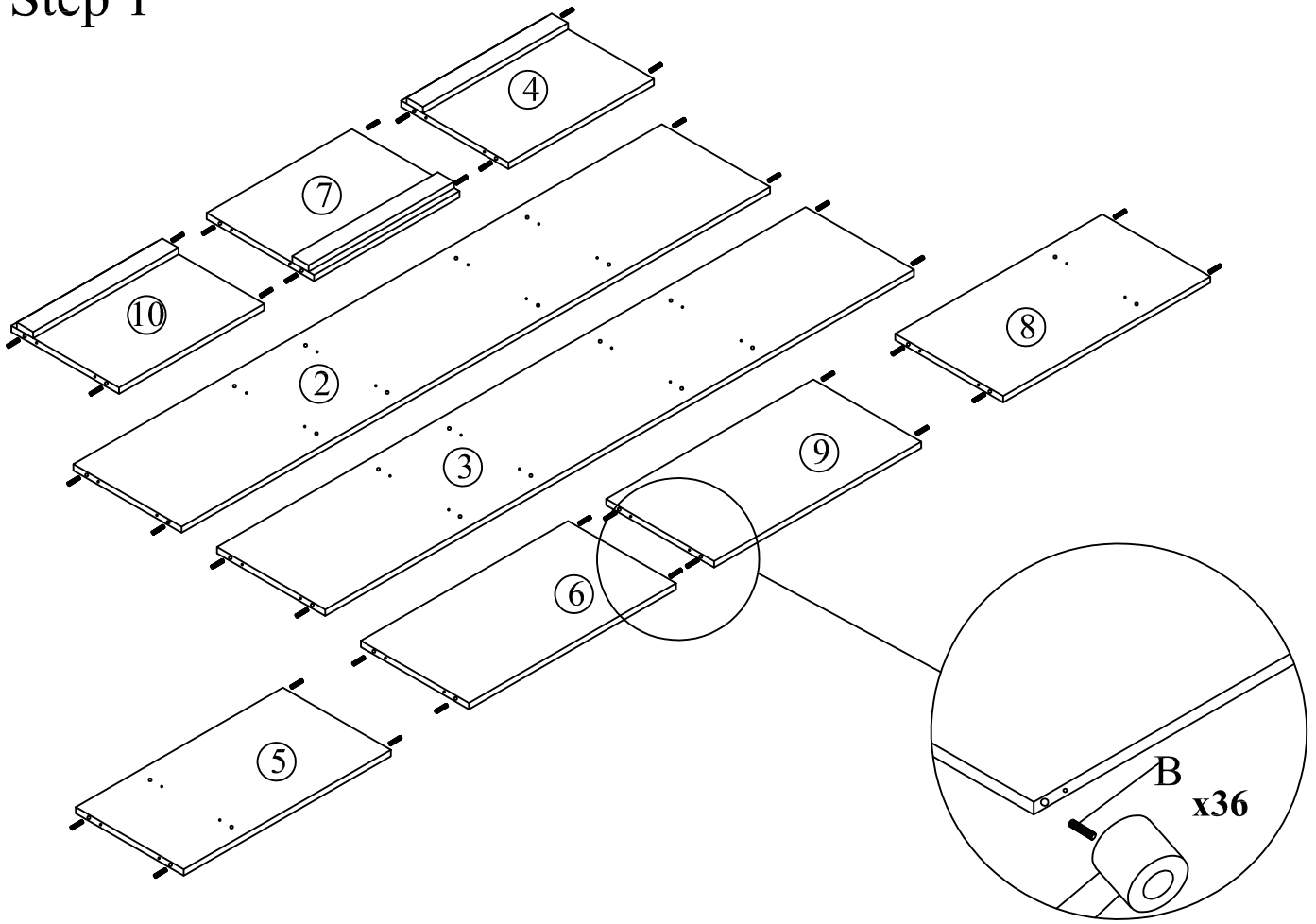
MPC 8019

Part List		QTY
1	Top Panel	1
2	Left Side Panel	1
3	Right Side Panel	1
4	Upper Support Panel	1
5	Upper Middle Panel (1)	1
6	Upper Middle Panel (2)	1
7	Middle Support Panel	1
8	Down Middle Panel (1)	1
9	Down Middle Panel (2)	1
10	Down Support Panel	1
11	Bottom Panel	1
12	Door	3
13	Legs	4
14	Back Panel	1

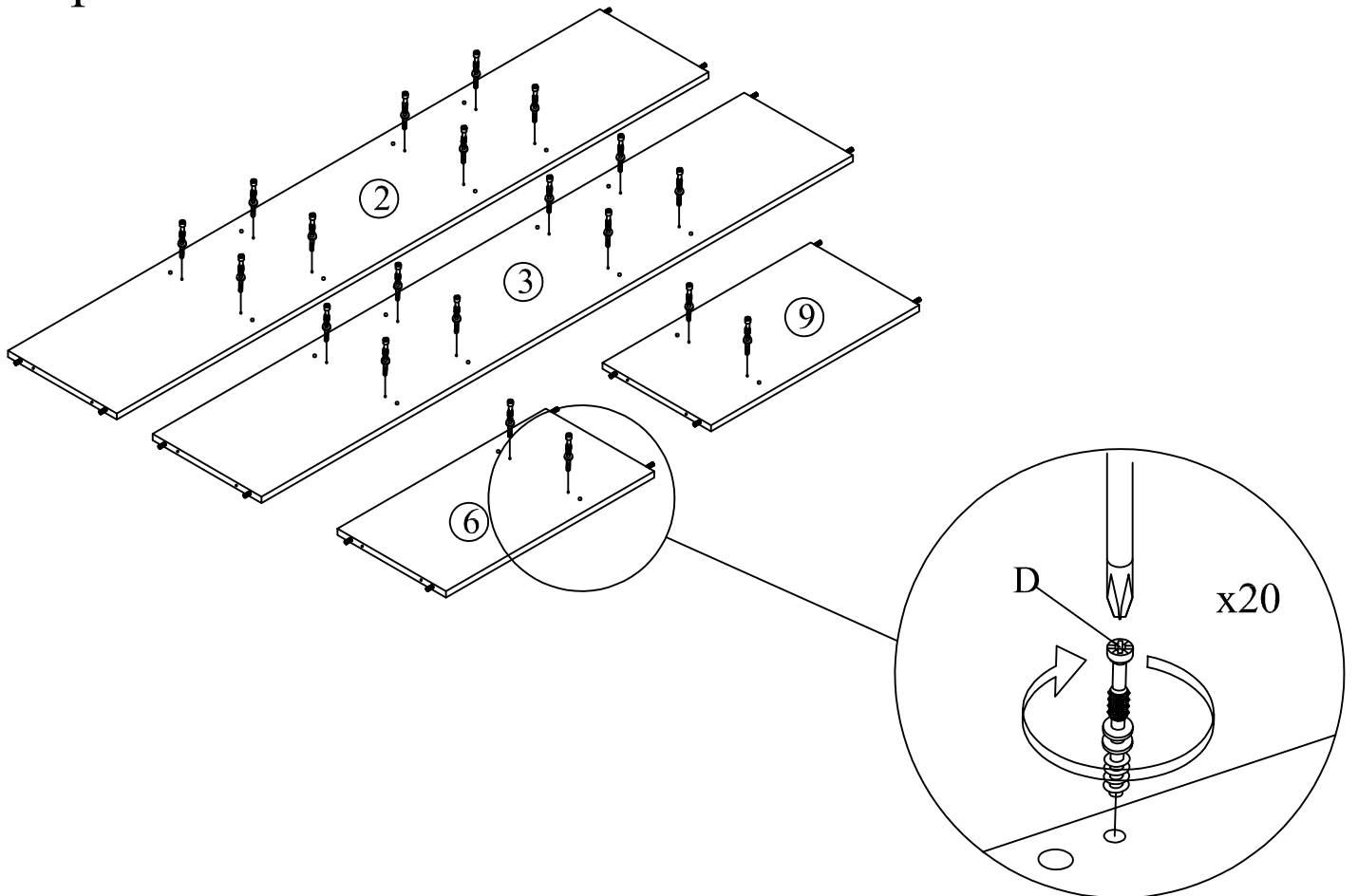
Hardware		QTY
A	Allen Key M4 	1
B	Dowel 	36
C	JCBC W Screw M6x40 	16
D	Mini Fix Bolt 	20
E	Mini Fix Housing 	20
F	Mini Fix Cap 	20
G	CSK Screw M3.5x16mm 	52
H	Handle 	3
I	Handle screw 22mm 	6
J	Hinges 	6
K	Nail 	64



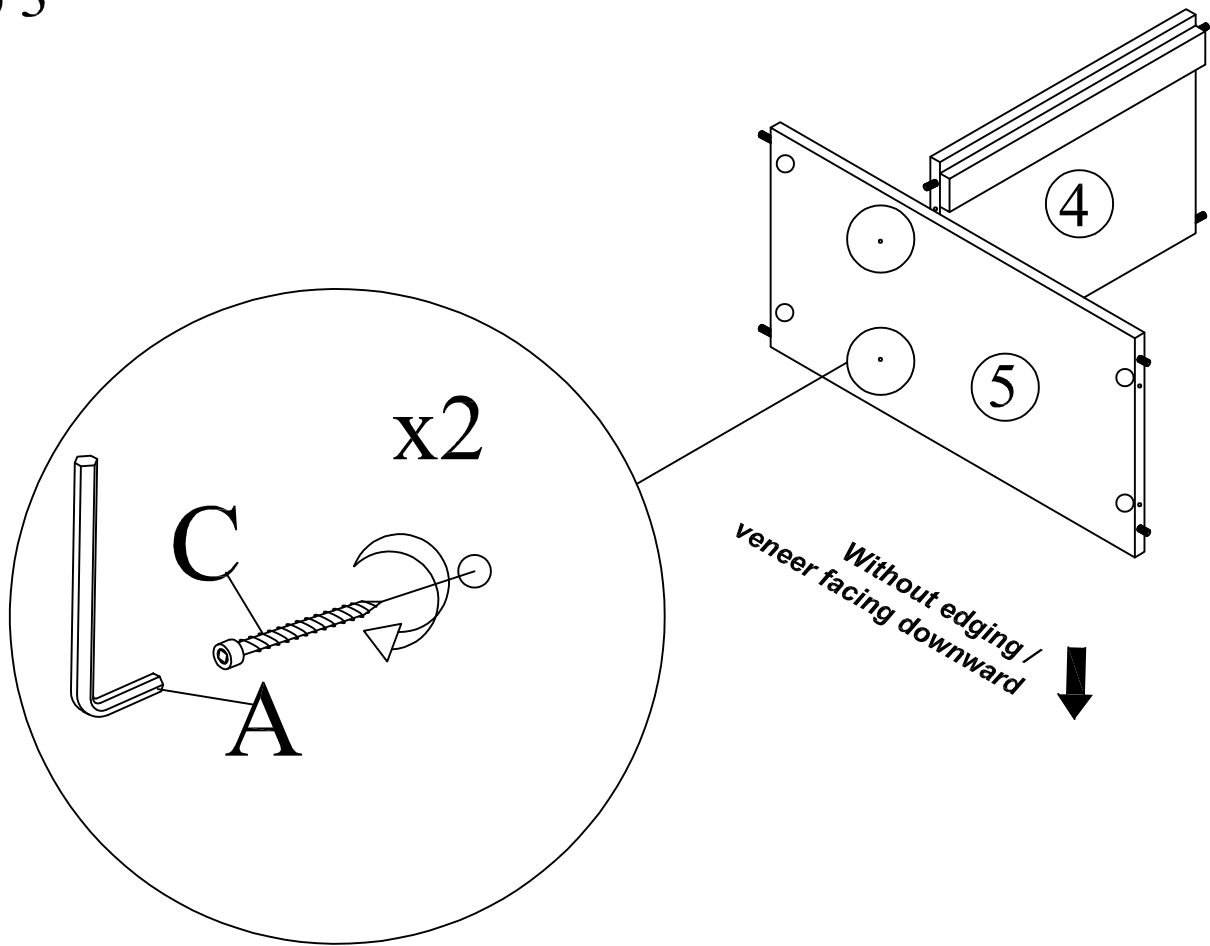
Step 1



Step 2



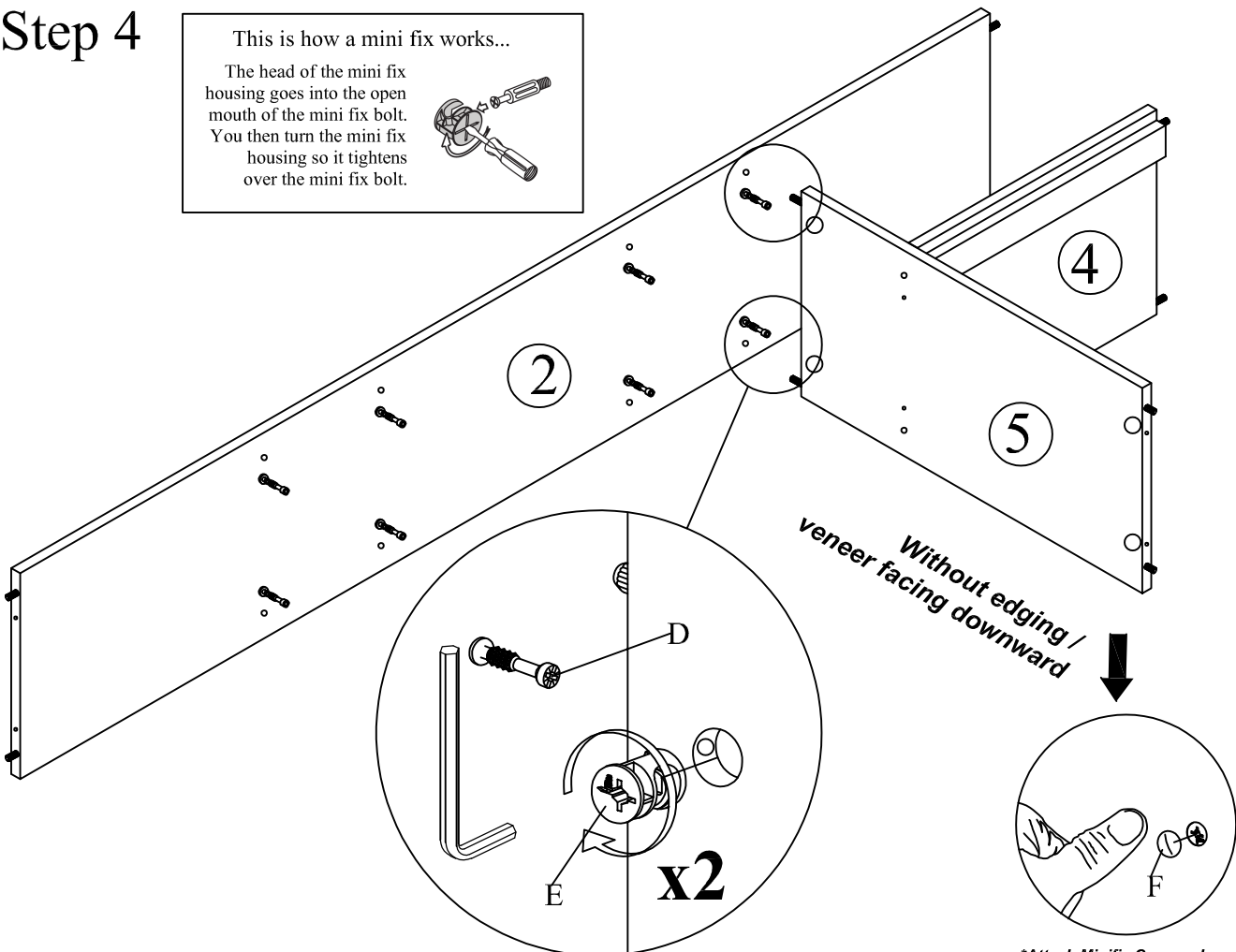
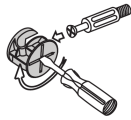
Step 3



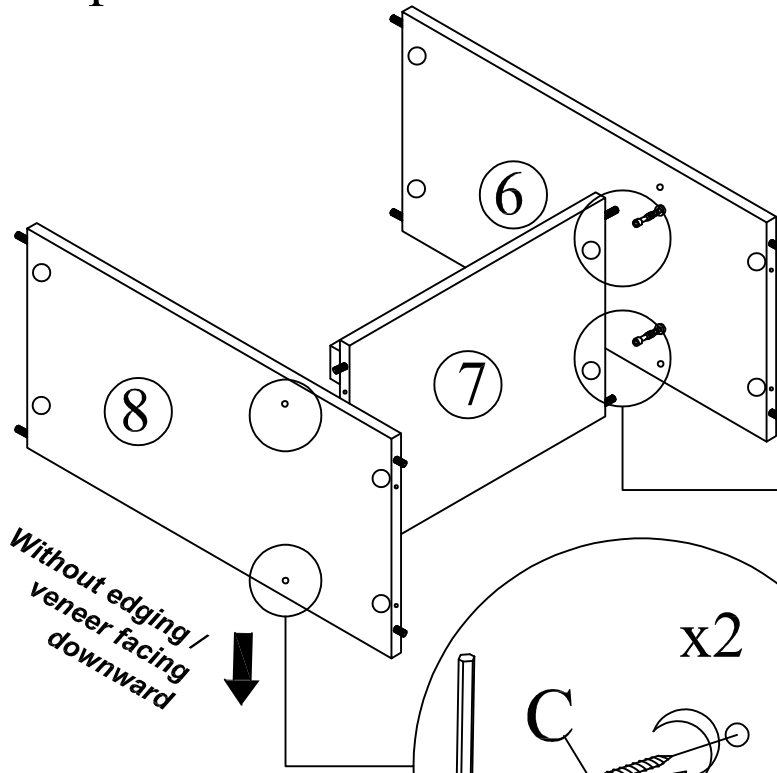
Step 4

This is how a mini fix works...

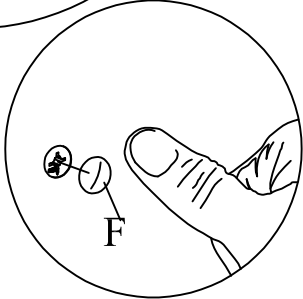
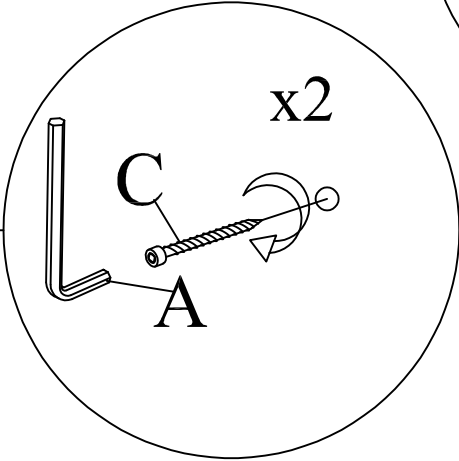
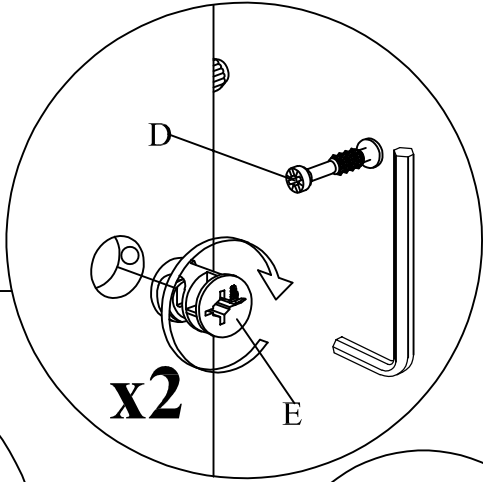
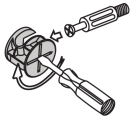
The head of the mini fix housing goes into the open mouth of the mini fix bolt. You then turn the mini fix housing so it tightens over the mini fix bolt.



Step 5



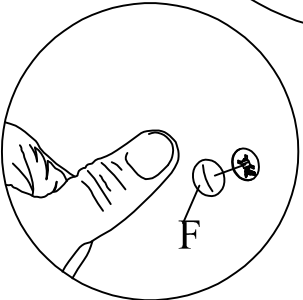
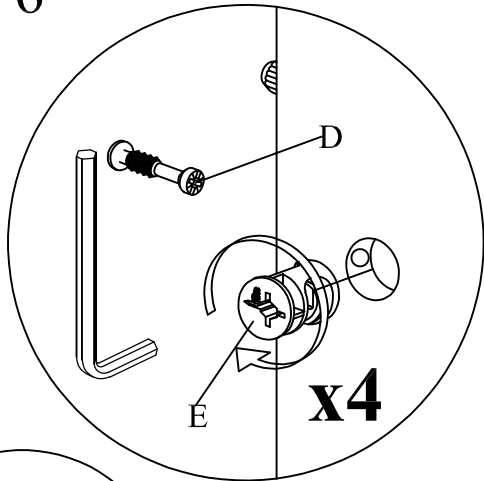
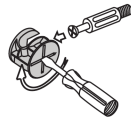
This is how a mini fix works...
 The head of the mini fix housing goes into the open mouth of the mini fix bolt. You then turn the mini fix housing so it tightens over the mini fix bolt.



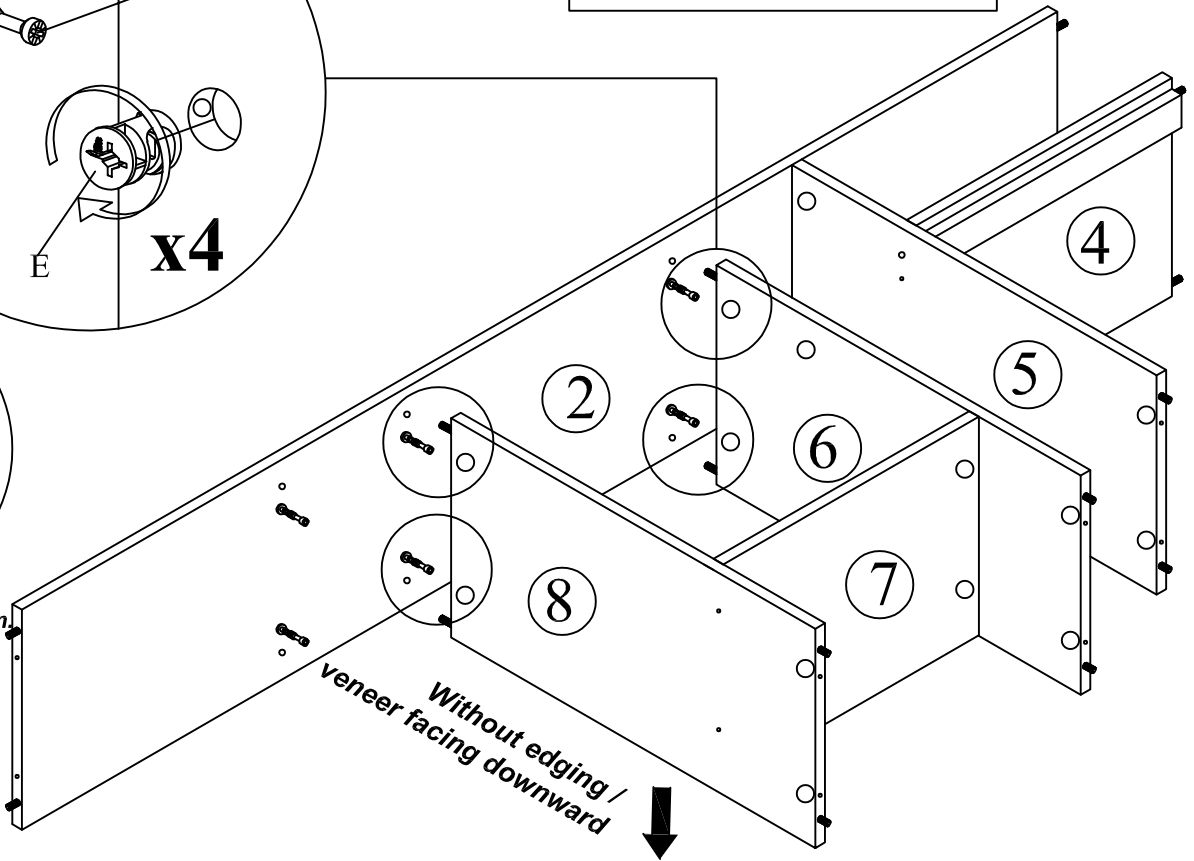
**Attach Minifix Cap as shown.*

Step 6

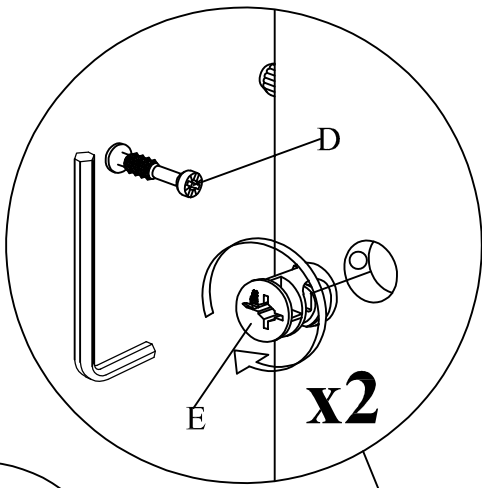
This is how a mini fix works...
 The head of the mini fix housing goes into the open mouth of the mini fix bolt. You then turn the mini fix housing so it tightens over the mini fix bolt.



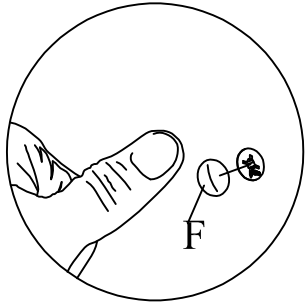
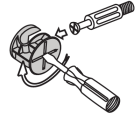
**Attach Minifix Cap as shown.*



Step 7

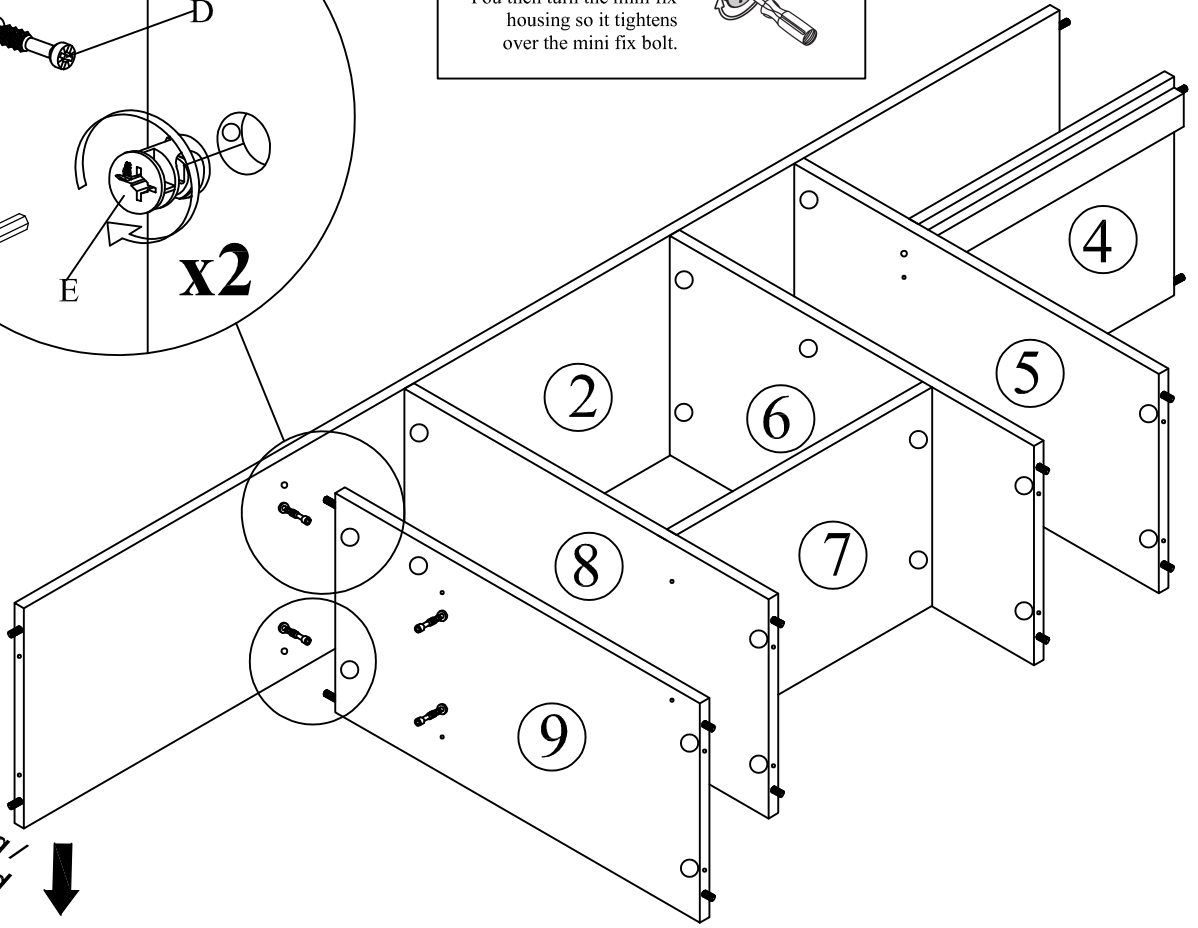


This is how a mini fix works...
The head of the mini fix housing goes into the open mouth of the mini fix bolt. You then turn the mini fix housing so it tightens over the mini fix bolt.

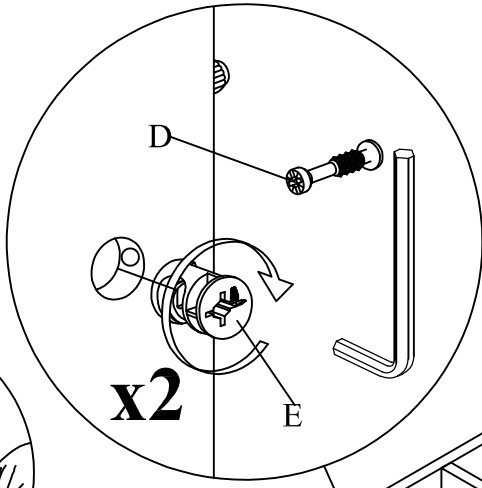


*Attach Minifix Cap as shown.

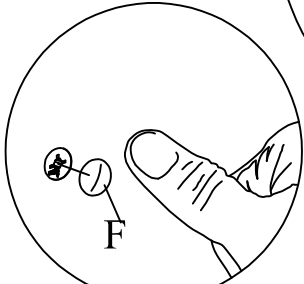
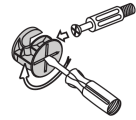
Without edging /
veneer facing downward



Step 8

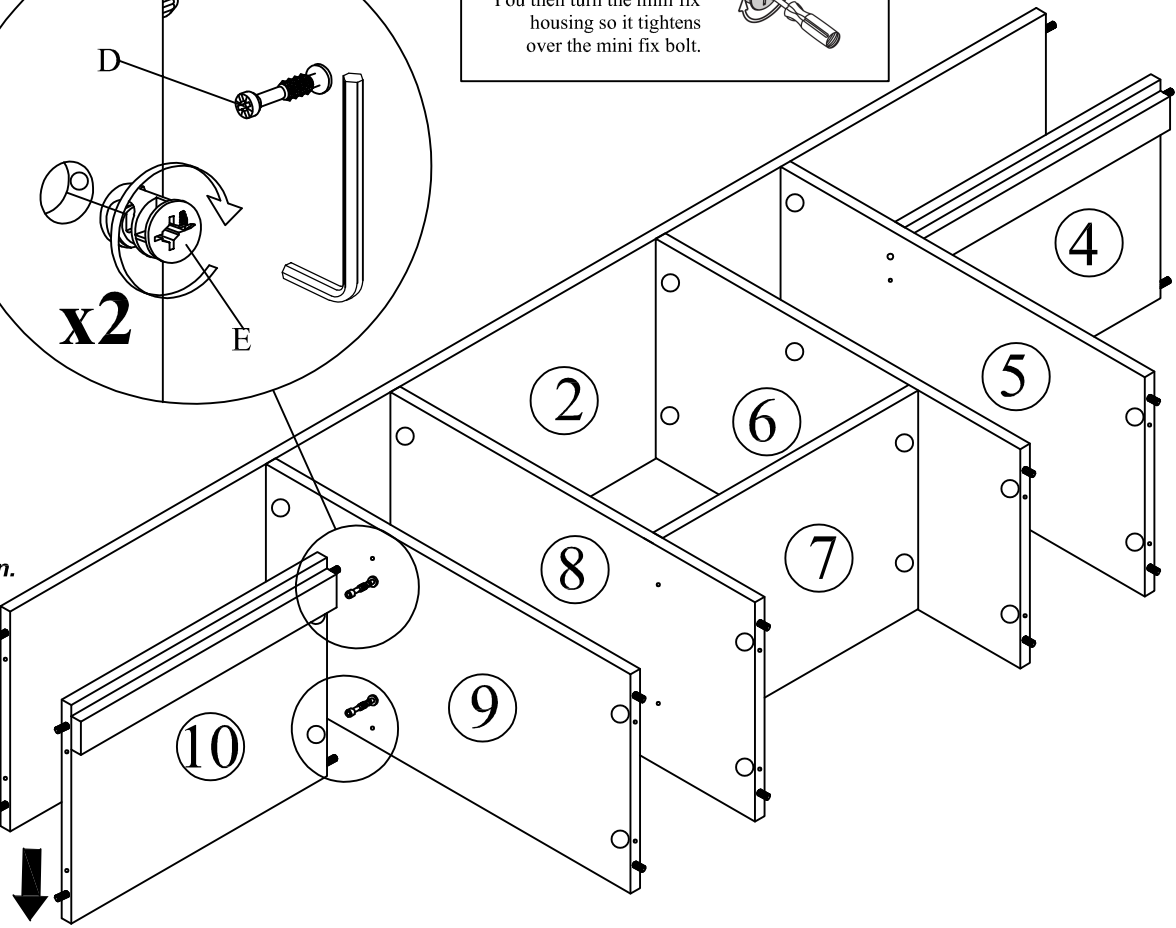


This is how a mini fix works...
The head of the mini fix housing goes into the open mouth of the mini fix bolt. You then turn the mini fix housing so it tightens over the mini fix bolt.



*Attach Minifix Cap as shown.

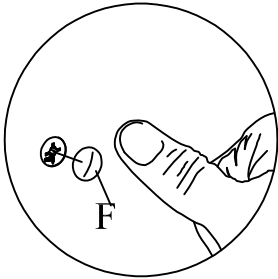
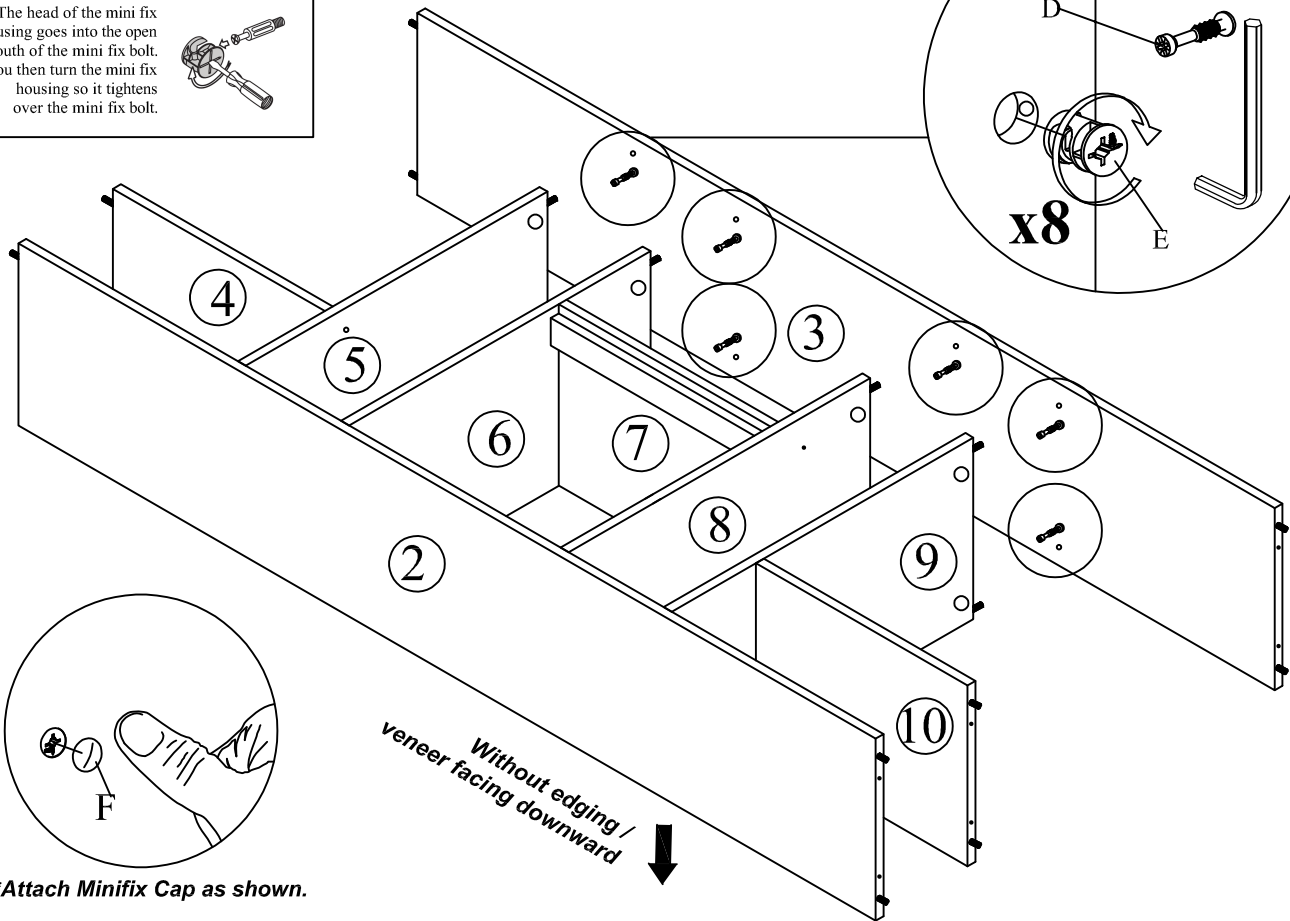
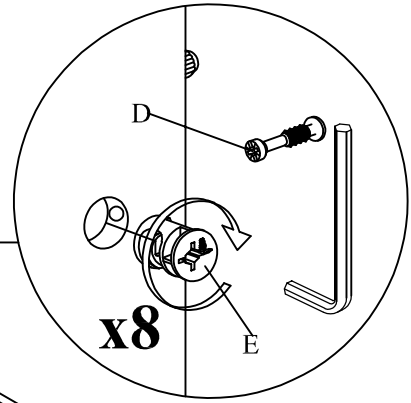
Without edging /
veneer facing downward



Step 9

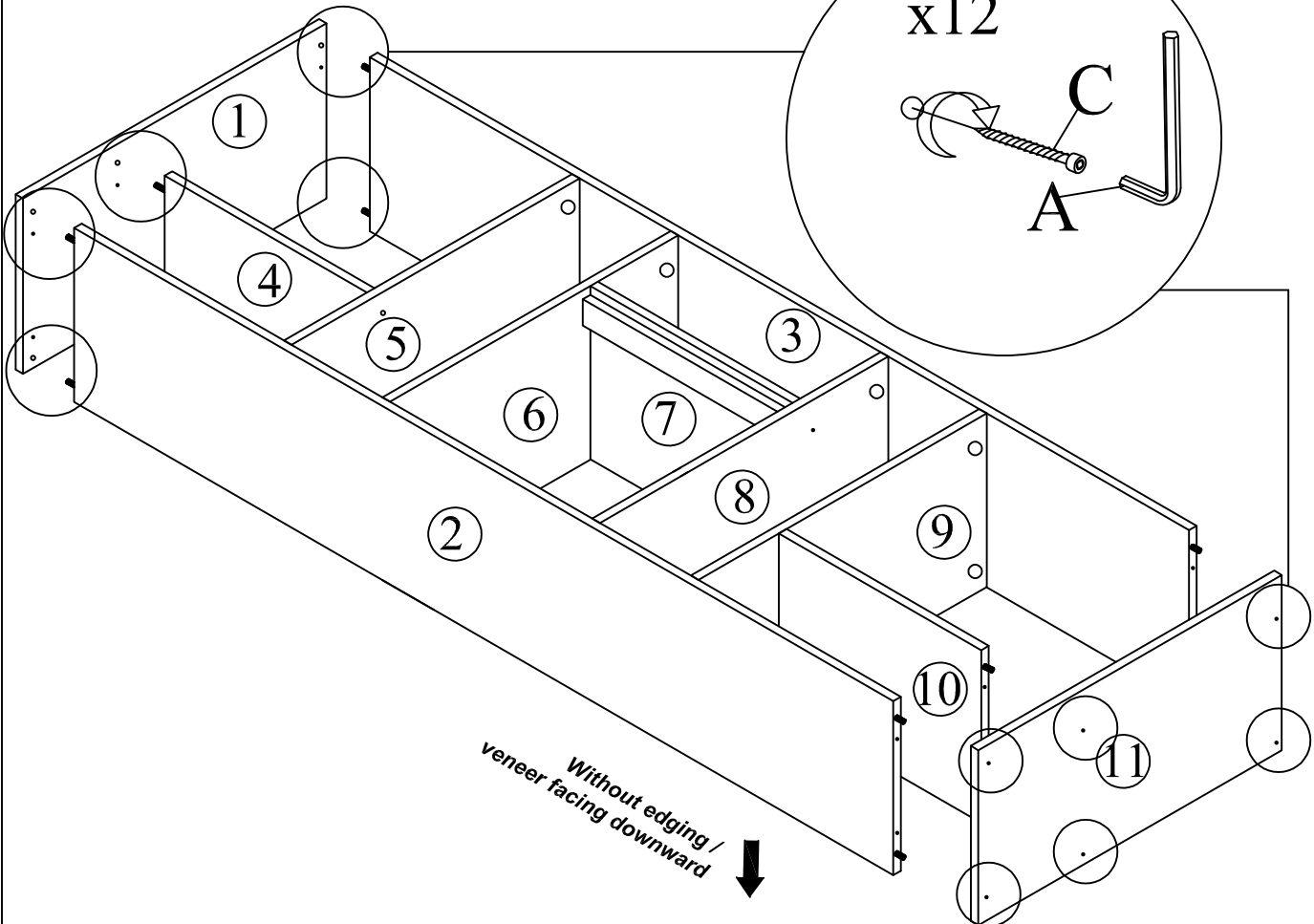
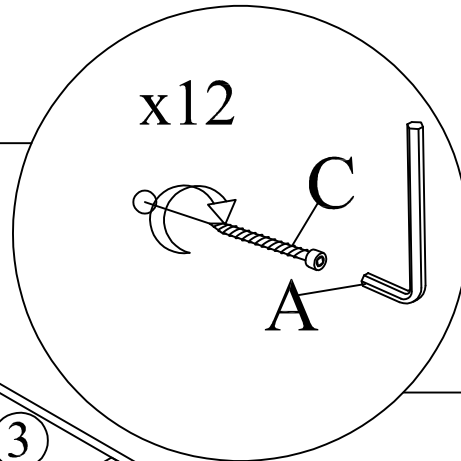
This is how a mini fix works...

The head of the mini fix housing goes into the open mouth of the mini fix bolt. You then turn the mini fix housing so it tightens over the mini fix bolt.

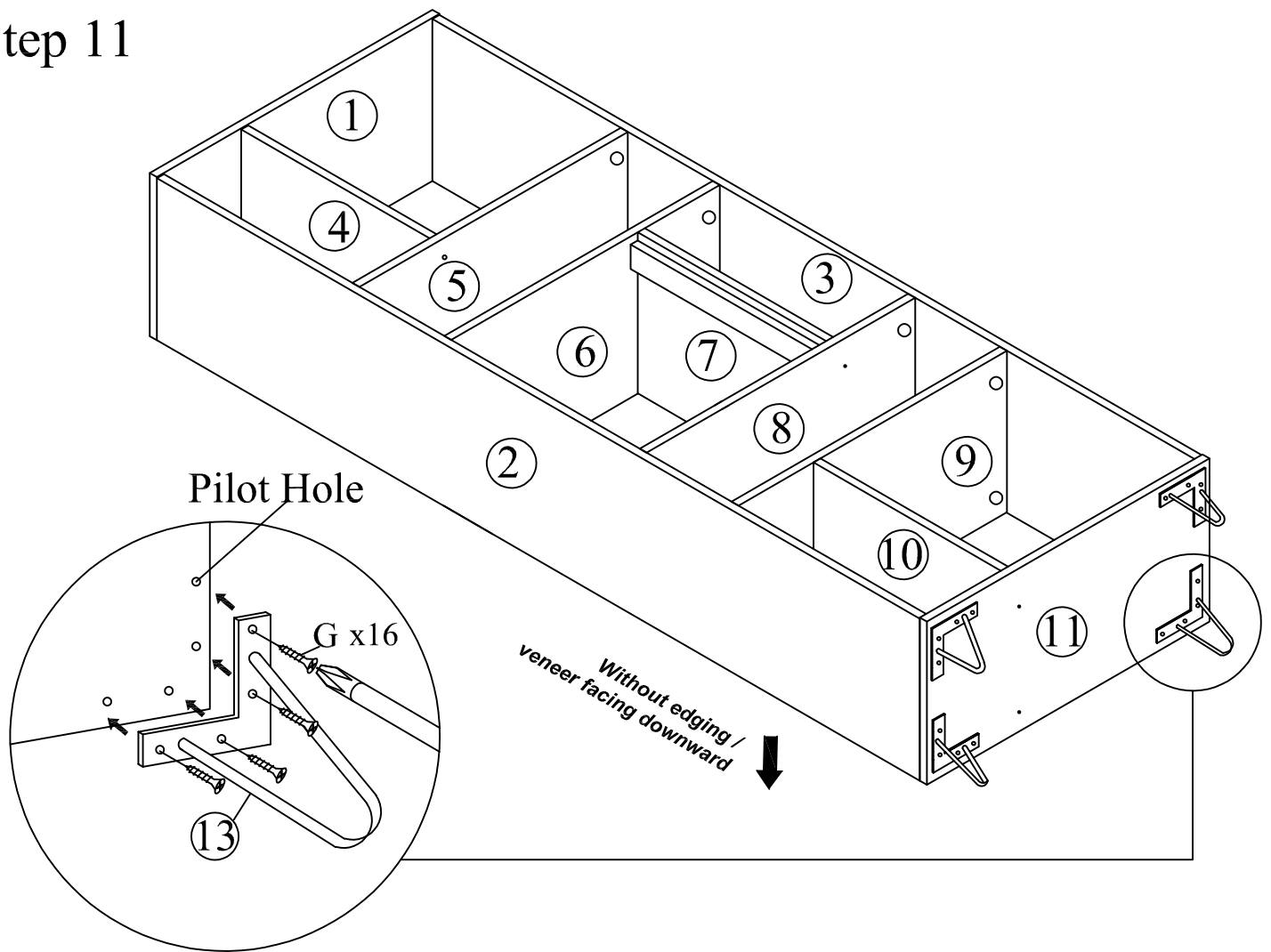


*Attach Minifix Cap as shown.

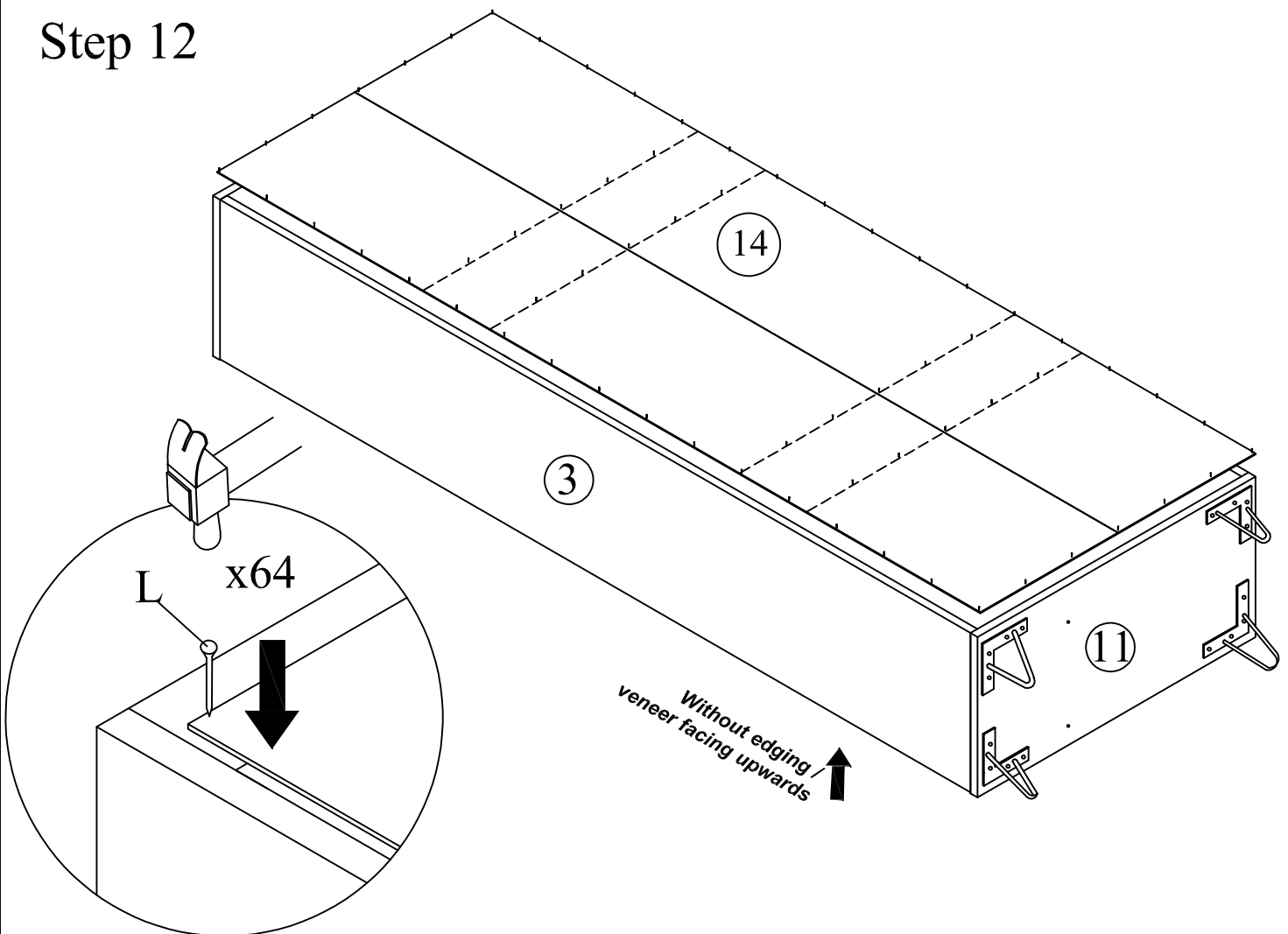
Step 10



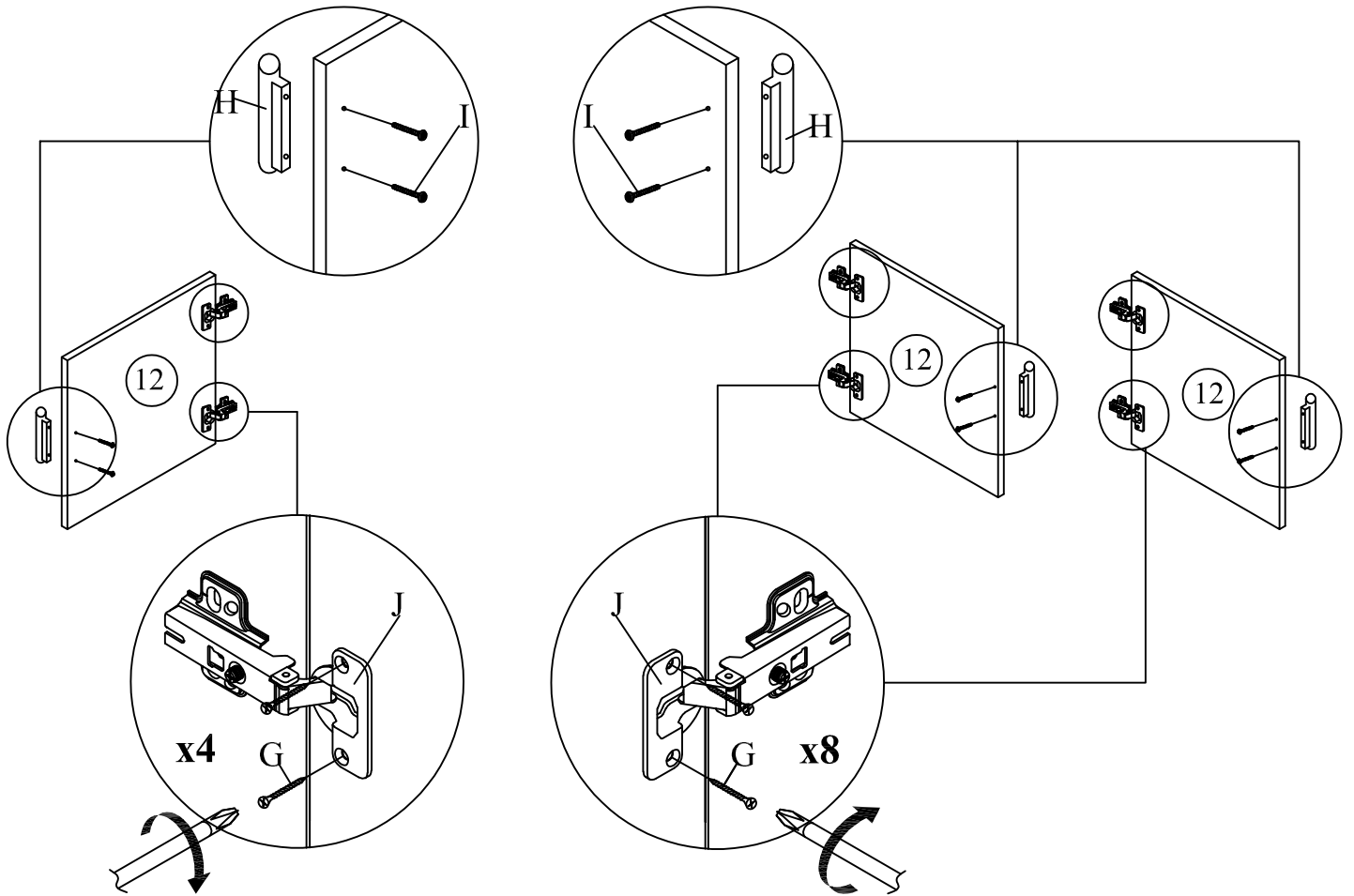
Step 11



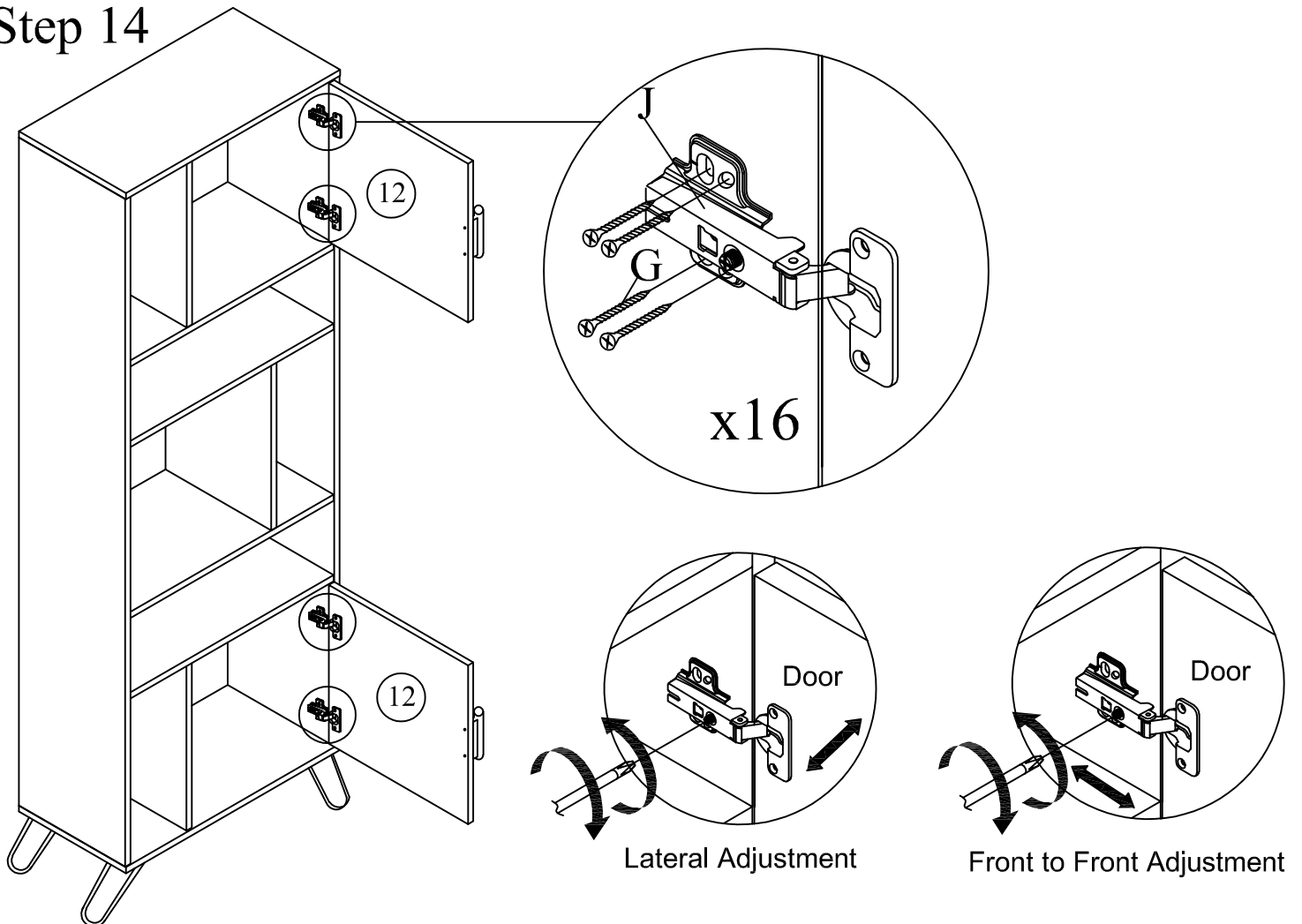
Step 12



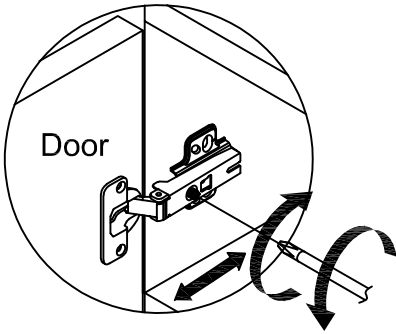
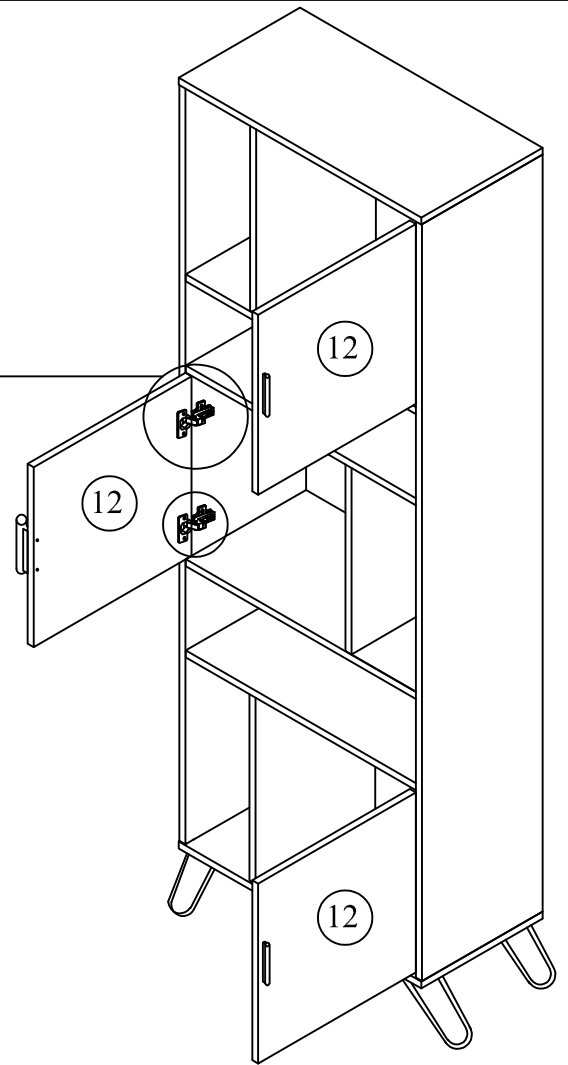
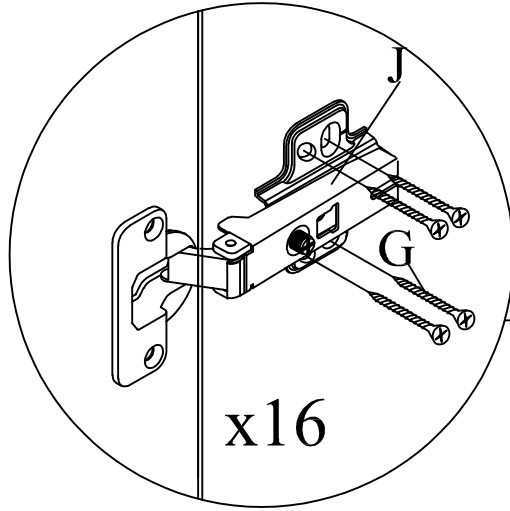
Step 13



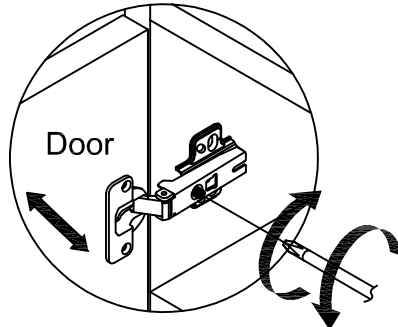
Step 14



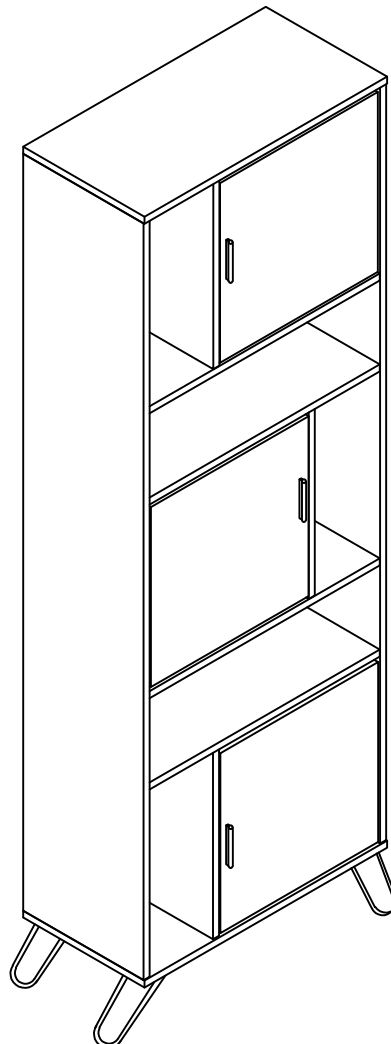
Step 15



Front to Front Adjustment



Lateral Adjustment



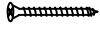
Anti -
Tipping

(A)



CSK Screw
M3.5x16mm
1PC

(B)



CSK Screw
M4x50mm
1PC

(C)

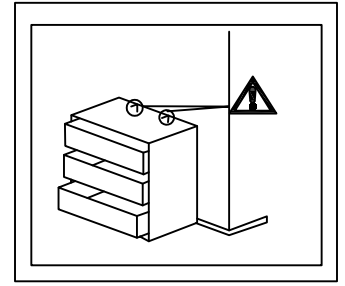
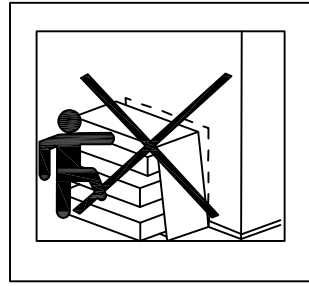


L BRACKET
2PCS

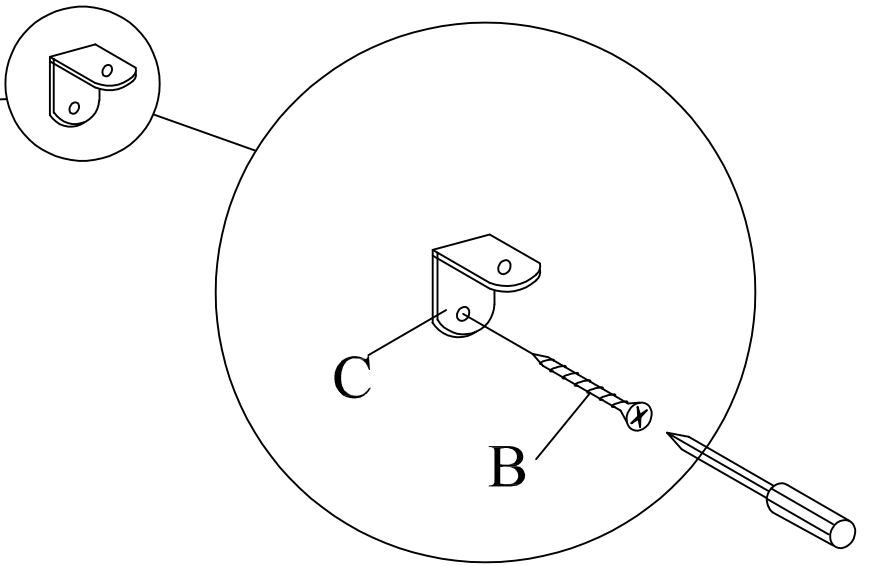
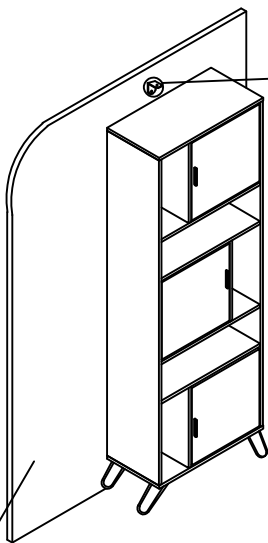
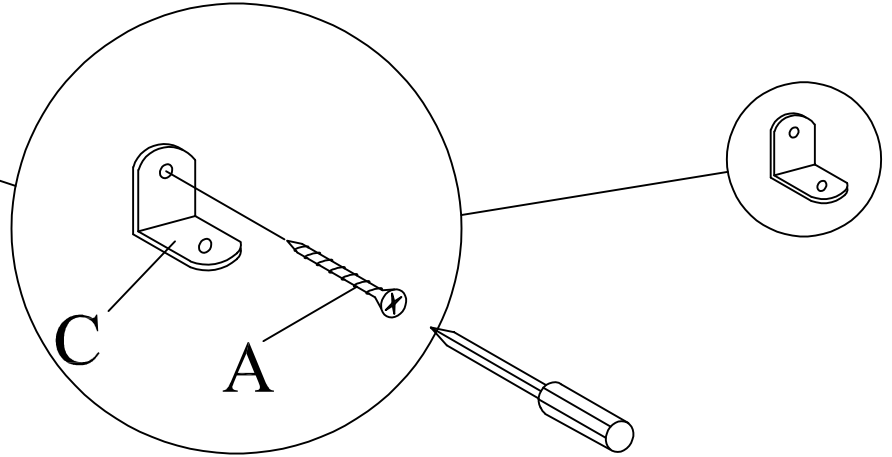
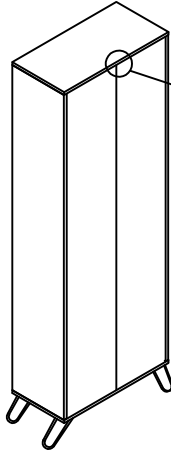
(D)



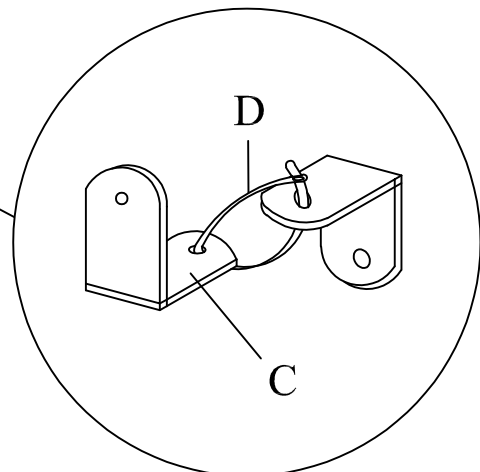
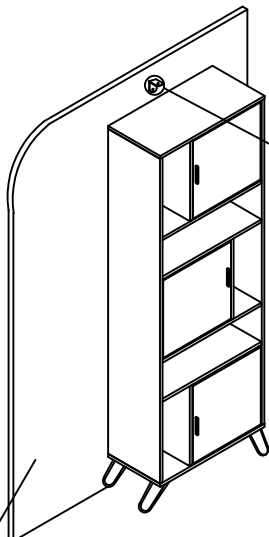
CABLE TIE
1PC



BACK VIEW



WALL



WALL